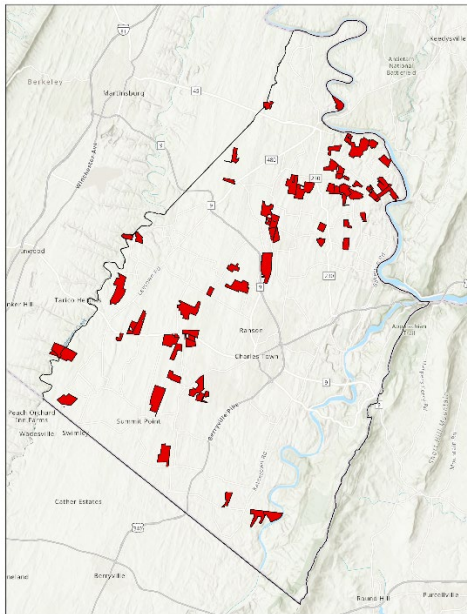


Jefferson County Farmland Protection Board Quick Facts



Performance to Date



Farmland Protection Board Easements
in Jefferson County

- Established by the Jefferson County Commission in July 2000
- **58 farms under easement – totaling 6,846 protected acres**
- Funds expended to date:
 - County: \$13,868,848
 - Federal & State: \$11,318,453
- Total Investment in Easements: \$25,187,301
- Donated easement value: \$16,480,635
- **Total Value: \$41,667,936**

Source: Jefferson County Farmland Protection Board, June 2024

Current Status

FY 2020 commitments

- **1 application selected for funding – 176 acres, \$1,013,000 total asking price**
 - RCPP (USDA/NRCS): 1 property. County: \$506,500, Federal: \$506,500

FY 2023 Commitments

- **2 applications selected for funding – 205 acres, \$1,363,000 total asking price**
 - County Funding: \$613,225, Federal: \$613,225

FY 2024 Commitments

- **2 applications selected for funding – 220 acres, \$1,380,000 total asking price**
 - County Funding: \$990,000, Federal: \$390,000

Abbreviations: **RCPP**, Regional Conservation Partnership Program; **ACEP/ALE**, Agricultural Conservation Easement Program/Agricultural Land Easement, **ABPP/NPS**, American Battlefield Protection Program/National Park Service

Source:
Jefferson County Farmland Protection Board

Jefferson County Agriculture

- Total Acres in agriculture: 60,434
- Number of farms: 520
- Total market value (2022): \$40,810,000
- Individuals working exclusively in agriculture: 329

Source: Census of Agriculture, 2022. United States Department of Agriculture