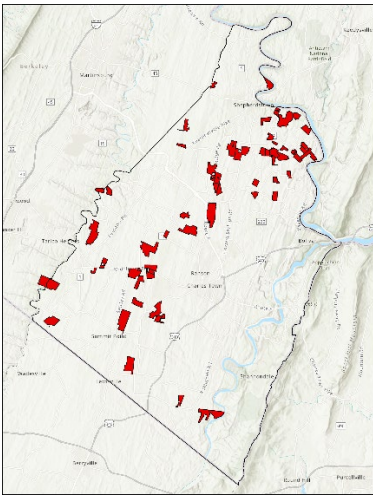


# Jefferson County Farmland Protection Board Quick Facts



## Performance to Date



Farmland Protection Board  
Easements in Jefferson County

- Established by the Jefferson County Commission in July 2000
- **56 farms under easement – totaling 6,543 protected acres**
- Funds expended to date:
  - County: \$12,992,466
  - Federal & State: \$10,806,241
- Total Investment in Easements: \$23,798,707
- Donated easement value: \$15,507,417
- **Total Value: \$39,306,124**

Source: Jefferson County Farmland Protection Board, August 2023

## Current Status

### FY 2022 commitments

- **2 applications selected for funding – 269 acres, \$1,415,900 total asking price (bargain sale, 28% donation)**
  - RCPP (USDA/NRCS): 1 property. County: \$506,500, Federal: \$506,500
  - ACEP/ALE (USDA/NRCS) 1 property: County \$201,450, Federal \$201,450

### FY 2023 Commitments

- **4 applications selected for funding – 508.43 acres, \$2,948,917 total asking price (bargain sales, 21% donation)**
  - County Funding: \$1,849,460, Federal: \$1,099,460

Abbreviations: **RCPP**, Regional Conservation Partnership Program; **ACEP/ALE**, Agricultural Conservation Easement Program/Agricultural Land Easement, **ABPP/NPS**, American Battlefield Protection Program/National Park Service

Source:  
Jefferson County Farmland Protection Board

## Jefferson County Agriculture

- Total Acres in agriculture: 66,113
- Number of farms: 607
- Total market value (2017): \$28,654,000
- Individuals working exclusively in agriculture: 387

Source: Census of Agriculture, 2017. United States Department of Agriculture